

Clinical Image

Open Access, Volume 2

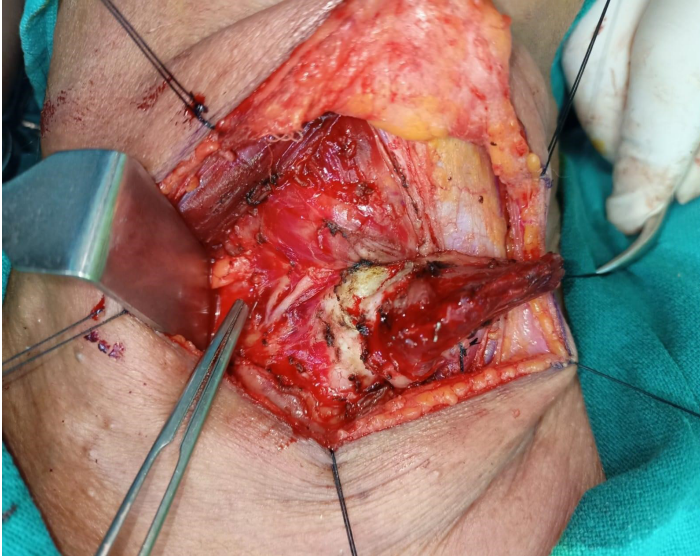
Double Right Recurrent Laryngeal Nerve: Intraoperative Identification

Kaushal Yadav*

Clinical Lead Surgical Oncology, Narayana Superspeciality Hospital, Gurugram, India.

Description

Recurrent laryngeal nerves are located lateral to the ligament of Berry and behind the tubercle of Zuckerkandl where they enter the larynx bilaterally. Various anatomical alteration in course of recurrent laryngeal nerves has been reported including non-recurrent course. Recurrent laryngeal nerve injury has been reported as 0.6-1% even in experienced hands. So, it is important to identify the course and protect the of recurrent laryngeal nerve. Here we present the intraoperative clinical image of a very rare variation of recurrent laryngeal nerve as double recurrent laryngeal nerve identified on right side during total thyroidectomy for papillary carcinoma thyroid.



Manuscript Information: Received: Oct 25, 2022; Accepted: Nov 18, 2022; Published: Nov 28, 2022

Correspondance: Kaushal Yadav, Clinical Lead Surgical Oncology, Narayana Superspeciality Hospital, Gurugram, India.

Email: kaushalyadavoo7@yahoo.com

Citation: Yadav K. Double Right Recurrent Laryngeal Nerve: Intraoperative Identification. *J Oncology*. 2022; 2(2): 1063.

Copyright: © Yadav K 2022. Content published in the journal follows creative common attribution license.